



# Hunan Credo Pump Co., Ltd.

---



With the history over 50 years, Hunan Credo Pump Co., Ltd. (hereinafter called 'Credo Pump') is a professional pump manufacture to produce reliable energy-saving and intelligent pumps. Credo pump derives from Changsha Industry Pump Factory founded in 1961, is consisted of core engineer and administrators from it. In May 2010, Credo Pump settled in Jiuhua Economy & Technology Development Park, built one of the New test center which could test the max. inlet dia.2500mm, max. power 2800kw. Now, we could produce 5000 sets of industry pumps per year.

Our vision is devoting to promoting the development of Chinese pump industry and the adjusting of pump structure, providing more reliable, more energy-saving and more intelligent pumps.





# Certificate of Compliance

This certificate is issued for the following:

## Centrifugal Fire Pumps

(Axial Split-Case Type)

CSF125-250, CSF125-300, CSF200-315, CSF200-330 and CSF250-350  
(see attached listing)

### Prepared for:

Hunan Credo Pump Co., Ltd.  
No.2, Peugeot East Road, Jiuhua District  
Xiangtan City, Hunan Province  
P.R. China

FM Approvals Class: 1311 (January 2018)

Approval Identification: PR453367

Approval Granted: February 11, 2021

To verify the product continues to be Approved please refer to [www.approvalguide.com](http://www.approvalguide.com).

Said Approval is subject to satisfactory field performance, continuing Surveillance Audits, and strict conformity to the constructions as shown in the Approval Guide, an online resource of FM Approvals.

A handwritten signature in dark ink, appearing to read 'D.B. Fuller', written over a horizontal line.

David B. Fuller  
VP, Manager – Fire Protection  
FM Approvals  
1151 Boston-Providence Turnpike  
Norwood, MA 02062



*Member of the FM Global Group*



# Certificate of Compliance

Product	Rated Capacity, (gal/min)	Rated Capacity, (dm <sup>3</sup> /min)	Rated Net Head at Rated Capacity, psi	Rated Net Head at Rated Capacity, kPa	Rated Speed, r/min	Suction Inlet, dia., in.	Discharge Outlet, dia., in.	Stage(s)
CSF125-250	100	380	79-118	545-815	2950	5	4	1
CSF125-250	150	570	79-117	545-805	2950	5	4	1
CSF125-250	200	755	79-116	545-800	2950	5	4	1
CSF125-250	250	945	79-116	545-800	2950	5	4	1
CSF125-250	350	1325	78-114	540-785	2950	5	4	1
CSF125-250	400	1515	78-114	540-785	2950	5	4	1
CSF125-250	450	1705	78-113	540-780	2950	5	4	1
CSF125-250	500	1875	77-112	530-770	2950	5	4	1
CSF125-250	750	2840	67-104	460-715	2950	5	4	1
CSF125-300	100	380	127-180	875-1240	2950	5	4	1
CSF125-300	150	570	127-179	875-1235	2950	5	4	1
CSF125-300	200	755	126-178	870-1225	2950	5	4	1
CSF125-300	250	945	126-178	870-1225	2950	5	4	1
CSF125-300	350	1325	125-176	860-1215	2950	5	4	1
CSF125-300	400	1515	125-175	860-1205	2950	5	4	1
CSF125-300	450	1705	125-175	860-1205	2950	5	4	1
CSF125-300	500	1895	123-173	850-1195	2950	5	4	1
CSF125-300	750	2840	111-160	765-1105	2950	5	4	1
CSF200-315	1000	3785	121	835	2950	8	6	1
CSF200-315	1250	4730	114	785	2950	8	6	1
CSF200-330	1250	4730	118-177	815-1220	2600	8	6	1
CSF200-330	1500	5680	112-174	770-1200	2600	8	6	1
CSF200-330	1250	4730	155-231	1070-1593	2950	8	6	1
CSF200-330	1500	5680	149-227	1025-1565	2950	8	6	1
CSF200-330	2000	7570	135-215	930-1480	2950	8	6	1
CSF250-350	2000	7570	118-183	815-1260	2900	10	8	1
CSF250-350	2500	9465	109-175	750-1205	2900	10	8	1
CSF250-350	2000	7570	122-145	840-1000	2280	10	8	1
CSF250-350	2500	9465	113-136	780-940	2280	10	8	1



Member of the FM Global Group

# CERTIFICATE OF COMPLIANCE

**Certificate Number** EX28346  
**Report Reference** EX28346-2020-10-27  
**Date** 2020-November-07

**Issued to:** Hunan Credo Pump Co Ltd  
No.2, Peugeot East Road, Jiuhua District,  
XiangtanHunan 411201 CN

**This is to certify that representative samples of** CENTRIFUGAL FIRE PUMPS, SPLIT CASE  
See Addendum Page for Product Designation(s).

Have been investigated by UL in accordance with the Standard(s) indicated on this Certificate.

**Standard(s) for Safety:** UL448- Standard for Centrifugal Fire Pumps for Fire Protection Service

**Additional Information:** See the UL Online Certifications Directory at <https://iq.ulprospector.com> for additional information

This Certificate of Compliance does not provide authorization to apply the UL Mark. Only the UL Follow-Up Services Procedure provides authorization to apply the UL Mark.

Only those products bearing the UL Mark should be considered as being UL Certified and covered under UL's Follow-Up Services.

Look for the UL Certification Mark on the product.



Bruce Mahrenholz, Director North American Certification Program

UL LLC

Any information and documentation involving UL Mark services are provided on behalf of UL LLC (UL) or any authorized licensee of UL. For questions, please contact a local UL Customer Service Representative at <http://ul.com/aboutul/locations/>



# CERTIFICATE OF COMPLIANCE

Certificate Number EX28346  
Report Reference EX28346-2020-10-27  
Date 2020-November-07

This is to certify that representative samples of the product as specified on this certificate were tested according to the current UL requirements

## Models

USL, CNL - Centrifugal Fire Pumps, Split Case

CSF125-250, CSF125-300, CSF150-270, CSF200-315, CSF200-330, CSF200-370,  
CSF250-350



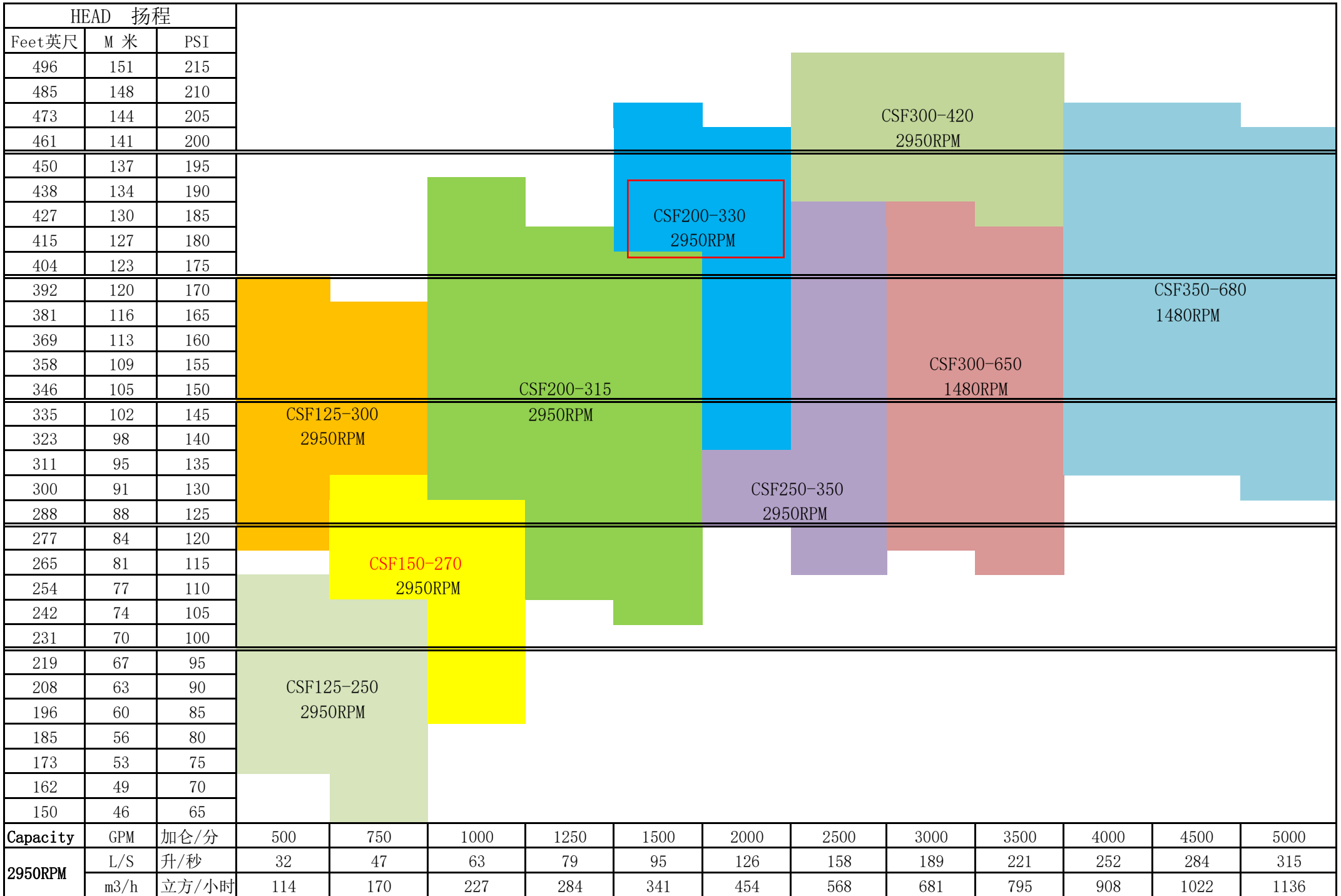
Bruce Mahrenholz, Director North American Certification Program

UL LLC

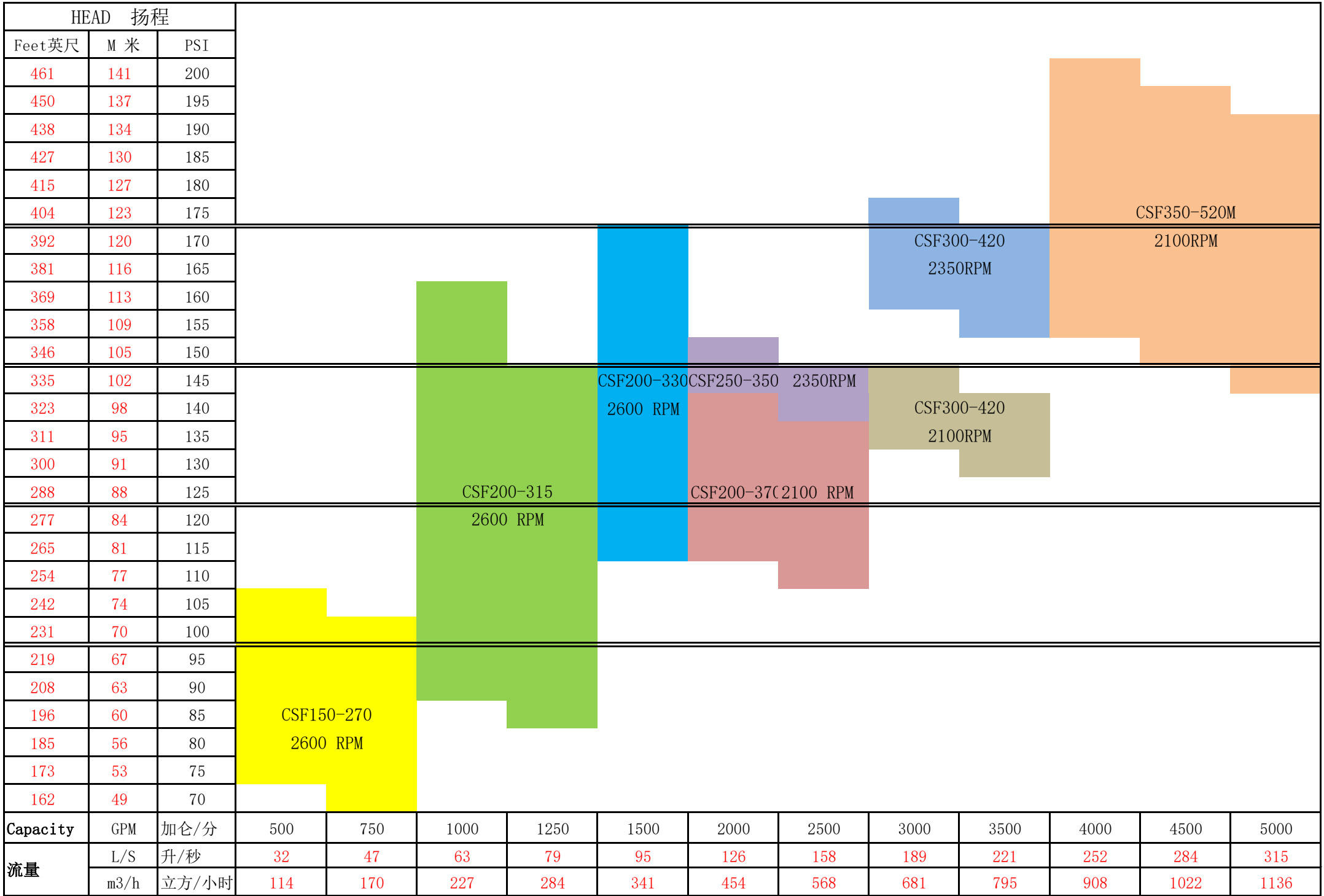
Any information and documentation involving UL Mark services are provided on behalf of UL LLC (UL) or any authorized licensee of UL. For questions, please contact a local UL Customer Service Representative at <http://ul.com/aboutul/locations/>



## 消防泵型谱图 (中开泵) Centrifugal Fire Pumps, Horizontal Split-Case Type (50HZ,1480RPM,2950RPM)

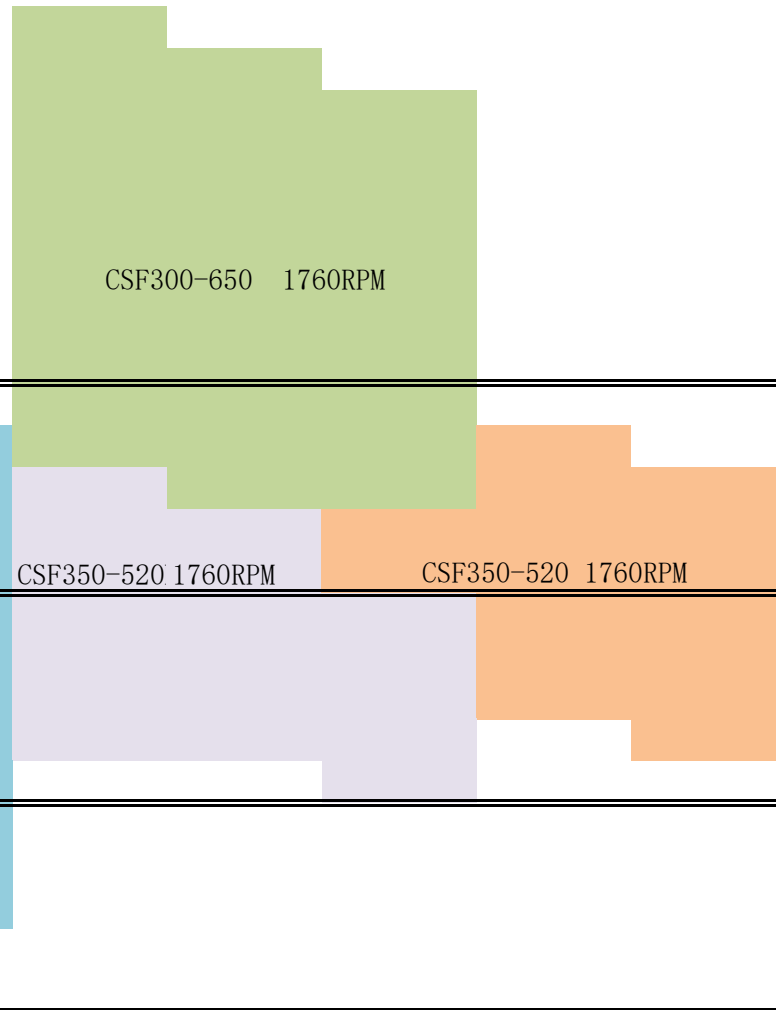


## 消防泵型谱图 (中开泵) Centrifugal Fire Pumps, Horizontal Split-Case Type (2100RPM, 2350RPM, 2600RPM)



## 消防泵型谱图 ( 中开泵 ) Centrifugal Fire Pumps, Horizontal Split-Case Type ( 60HZ , 1760RPM, 3550RPM)

HEAD 扬程														
Feet英尺	M 米	PSI												
485	148	210												
473	144	205												
461	141	200												
450	137	195												
438	134	190												
427	130	185												
415	127	180												
404	123	175												
392	120	170												
381	116	165												
369	113	160												
358	109	155												
346	105	150												
335	102	145												
323	98	140												
311	95	135												
300	91	130												
288	88	125												
277	84	120												
265	81	115												
254	77	110												
242	74	105												
231	70	100												
219	67	95												
208	63	90												
196	60	85												
185	56	80												
173	53	75												
162	49	70												
Capacity	GPM	加仑/分	500	750	1000	1250	1500	2000	2500	3000	3500	4000	4500	5000
流量	L/S	升/秒	32	47	63	79	95	126	158	189	221	252	284	315
	m <sup>3</sup> /h	立方/时	114	170	227	284	341	454	568	681	795	908	1022	1136





Head 扬程			消防泵型谱图 (端吸泵) Centrifugal Fire Pumps, Horizontal End-Suction Type (2600RPM)																
Feet	m	psi																	
英尺	米																		
335	102	145																	
323	98	140																	
311	95	135																	
300	91	130																	
288	88	125																	
277	84	120																	
265	81	115																	
254	77	110																	
242	74	105																	
231	70	100																	
219	67	95																	
208	63	90																	
196	60	85																	
185	56	80																	
173	53	75																	
162	49	70																	
150	46	65																	
138	42	60																	
127	39	55																	
115	35	50																	
Capacity	GPM	加仑/分									250	300	400	450	500	750	1000	1250	1500
2600RPM	L/S	升/秒									16			28	32	47	63	79	95
	L/min	升/分钟									946			1703	1893	2839	3785	4732	5678
	m3/h	立方/小时	57			102	114	170	227	284	341								

Head 扬程			消防泵型谱图 (端吸泵) Centrifugal Fire Pumps, Horizontal End-Suction Type (50HZ, 2950RPM)						
Feet	m	psi							
英尺	米								
450	137	195							
438	134	190							
427	130	185							
415	127	180							
404	123	175							
392	120	170							
381	116	165							
369	113	160							
358	109	155							
346	105	150							
335	102	145							
323	98	140							
311	95	135							
300	91	130							
288	88	125							
277	84	120							
265	81	115							
254	77	110							
242	74	105							
231	70	100							
219	67	95							
208	63	90							
196	60	85							
185	56	80							
173	53	75							
162	49	70							
150	46	65							
138	42	60							
Capacity	GPM	加仑/分	250	500	750	1000	1250	1500	2000
	L/S	升/秒	16	32	47	63	79	95	126
2950RPM	L/min	升/分钟	946	1893	2839	3785	4732	5678	7571
	m3/h	立方/小时	57	114	170	227	284	341	454

Head 扬程			消防泵型谱图 (端吸泵) Centrifugal Fire Pumps, Horizontal End-Suction Type (60HZ, 3550RPM)				
Feet	m	psi					
英尺	米						
508	155	220					
496	151	215					
485	148	210					
473	144	205					
461	141	200					
450	137	195					
438	134	190					
427	130	185					
415	127	180					
404	123	175			CDF125-280		
392	120	170					
381	116	165					
369	113	160					
358	109	155					
346	105	150					
335	102	145					
323	98	140					
311	95	135					
300	91	130					
288	88	125					
277	84	120					
265	81	115					
254	77	110					
242	74	105					
231	70	100					
219	67	95					
208	63	90					
196	60	85					
Capacity	GPM	加仑/分	250	500	750	1000	1250
3550RPM	L/S	升/秒	16	32	47	63	79
	L/min	升/分钟	946	1893	2839	3785	4732
	m3/h	立方/小时	57	114	170	227	284



# Hunan Credo Pump Co., Ltd.

## Horizontal Split case Fire Pump



As an enterprise with great sense of social responsibilities, Credo Pump company always devote to the technique innovation of industrial pumps, and try to change the awkward situation of that the famous brand monopolized the top end of industrial pump market, and we hope that we can change the national pump history and even make the global pump industry a difference. Supply most reliable , energy saving and safe pumps for human being, and we always believe that best pump, forever trust.

Credo Pump have unparalleled knowledge and expertise in developing quality fire pumps and pumping systems that perform reliably when needed in office buildings, schools, dormitories, industrial sites, high-density residential areas, manufacturing plants and commercial sites.

All Credo Fire Pumps and accessories are engineered to meet, or exceed, all applicable codes, including: FM approvals, ISO9001:2015, ISO 14001: 2015, ISO 45001: 2018 certification standards.





## Diesel Engine Split case Fire Pump



- Pump and engine mounted on the same common base plate and frame with coupling and coupling guard





## Vertical Turbine Fire Pumps

Optimized hydraulic model, redesigned according to the market, high efficiency with wide range, flow stable & low vibration, multi stage model available, and adopt the sleeve coupling model to reduce vibration.



### Easy Installation & Maintenance

Vertically installed pump could save a lot of construction cost, the pump could be equipped with remote monitoring & control system and auto exhausting system for air discharge.

### Performance Range

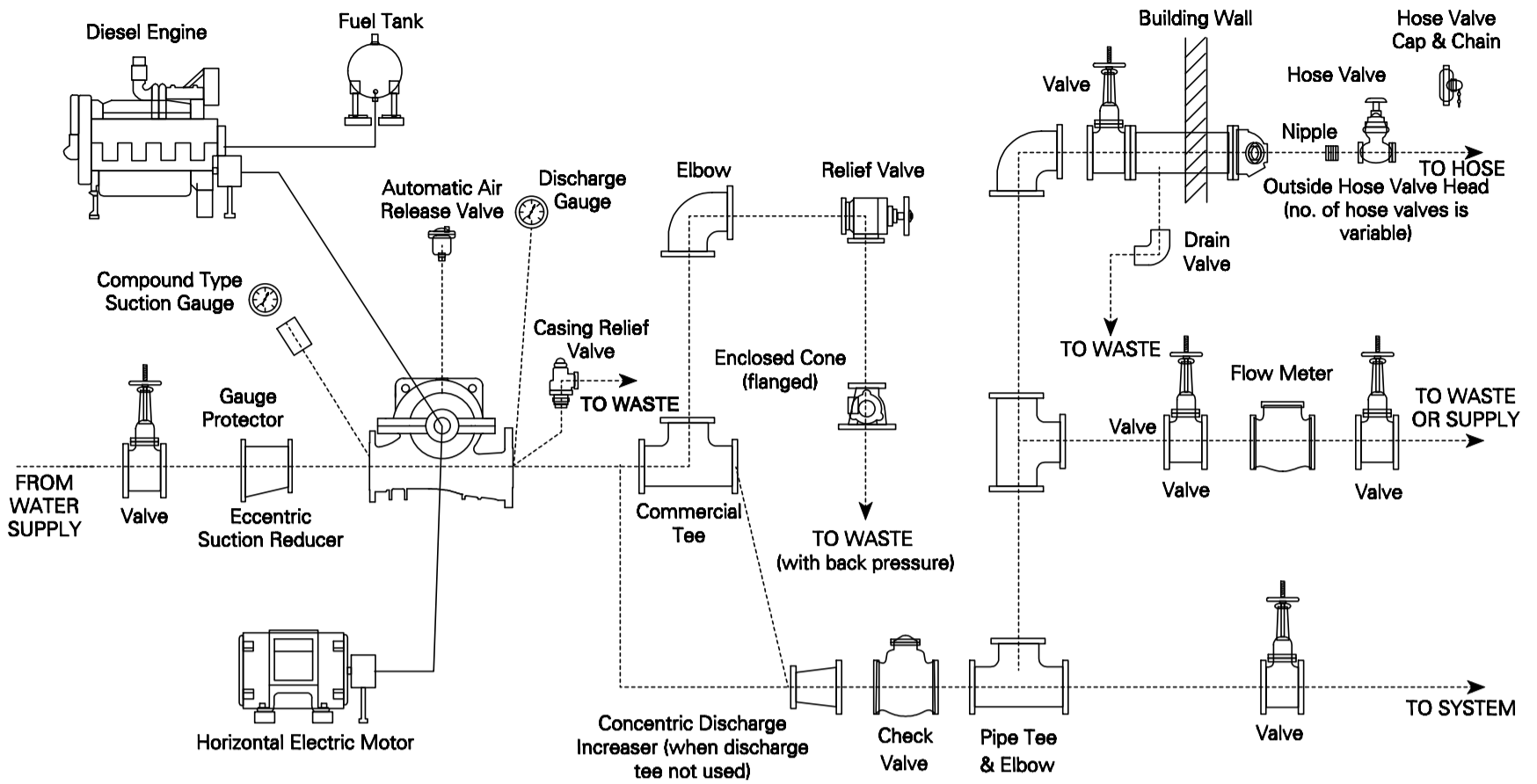
Capacity(Q): Up to 5000 GPM

Delivery Head(H) : Upto 180m

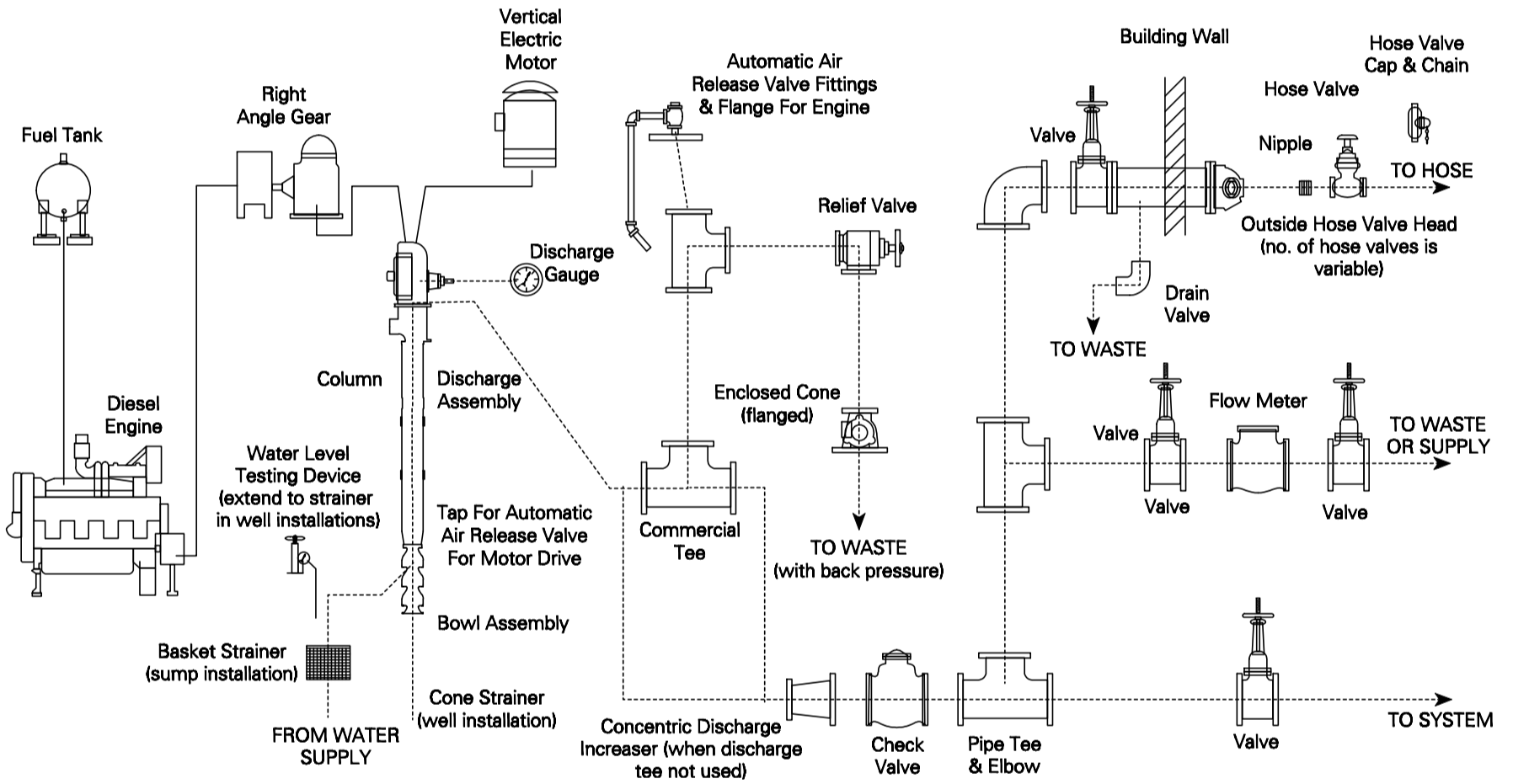
Liquid Temperature: Up to 80°C



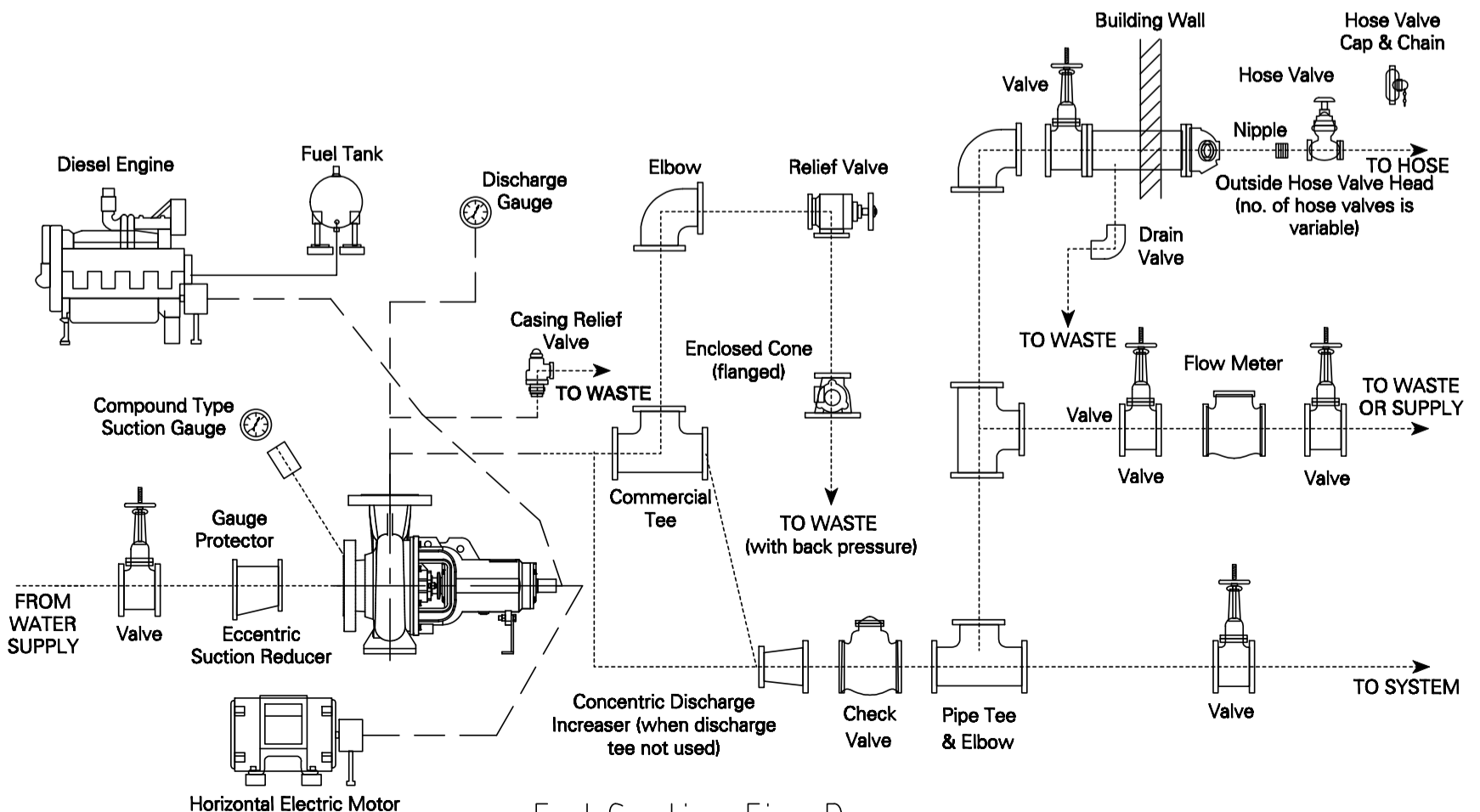
# CREDO FIRE PUMP SET ACCESSORIES SCHEMATIC DRAWING



Horizontal Split Case Fire Pump



Vertical Turbine Fire Pump



End Suction Fire Pump



# Hunan Credo Pump Co., Ltd.

---



Review the past, we feel gratified, and look forward to the future, we shoulder heavy responsibilities. Credo Pump always carry the mission of supply most reliable, energy-saving and safe pumps for humam being, and to became the top pump manufatures.

