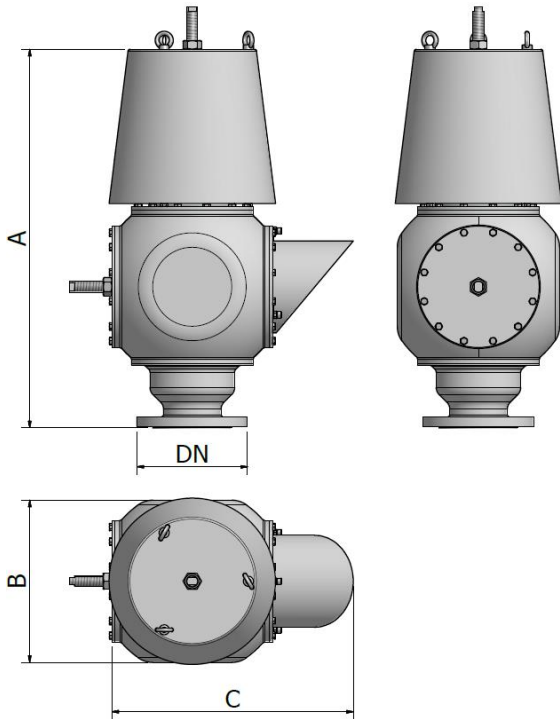


**MODULAR BREATHER VALVES VENT TO ATM**

# THE BEST SOLUTION FOR YOUR SAFETY

The breather valves vent to atm are safety devices developed to prevent un-allowable high and low pressure on vessels and process systems; the MODULAR valve design created by INNOVA provide the best solution to achieve flow performance, high tightness but with a compact and light design.



## TECHNICAL DATA STANDARD PRODUCT

### Settings:

Pressure: +2,0 mbarg up to +100 mbarg

+20 mmH<sub>2</sub>O up to +1000 mmH<sub>2</sub>O

Vacuum: -2,0 mbarg up to -100 mbarg

-20 mmH<sub>2</sub>O up to -1000 mmH<sub>2</sub>O

### Operating temperature:

-29 °C up to +140 °C continue

(+210 °C Max working Peak)

-20,2 °F up to +284 °F continue

(+410 °F Max working Peak)

if you need non-standard calibrations or temperatures, we will try in every way to satisfy your request!

DN	A	B	C
25	372	150	220
50	473	195	297
80	627	269	405
100	755	331	481
150	989	455	656
200	1142	520	787
250	1359	624	948
300	1487	686	1044

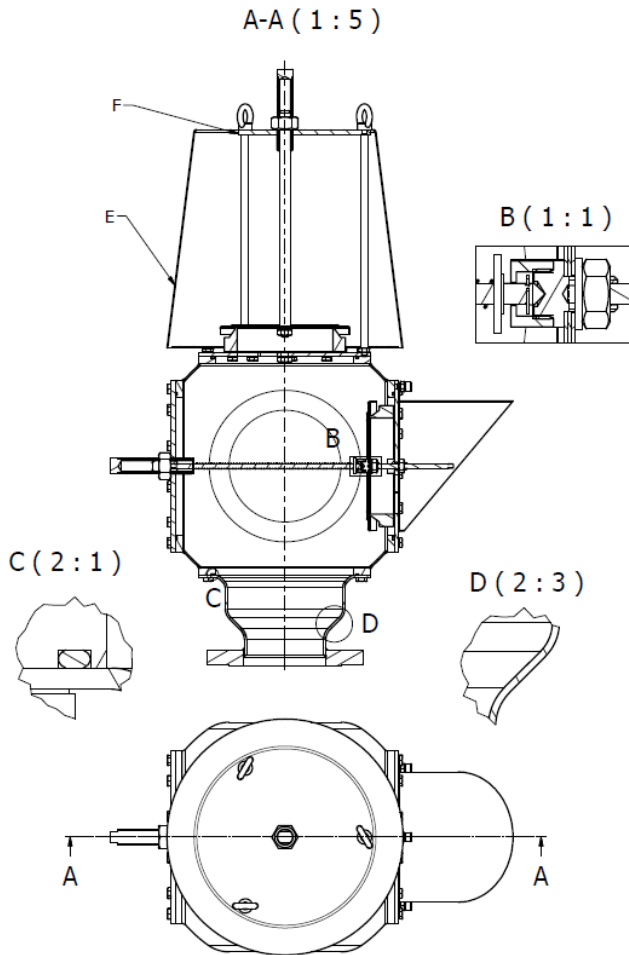
All measurements are expressed in mm (international metric system S.I.), the dimensions may vary for different reasons, for greater dimensional accuracy ask for the detailed drawing of the selected product.

## MATERIAL OF CONSTRUCTION

Housing	Seat/Pallet	Pallet seal	Weights	Gasket
Aluminium	316 Stainless	Viton	316 Stainless steel	Asbestos Free
Stainless steel		PTFE	PTFE	PTFE
Carbon steel		FEP teflon	ETFE coated	Other on request
Other exotic material		Metal to metal	HALAR coated	



# TECHNOLOGY OF BREATHER VALVE VENT TO ATM



## VIEW-B

The INNOVA "swivel joint" remove all parallelism defects between seat and pallet giving the best tightness solution. As result, both in case of weight or spring solution, the valve set is extremely accurate.

## VIEW-C

O-rings are sealing each housing part giving the possibility to open and reclose the valve for inspection without need to replace them.

## VIEW-D

The housing are fabricated from metal sheets providing the highest quality material with less Weight.

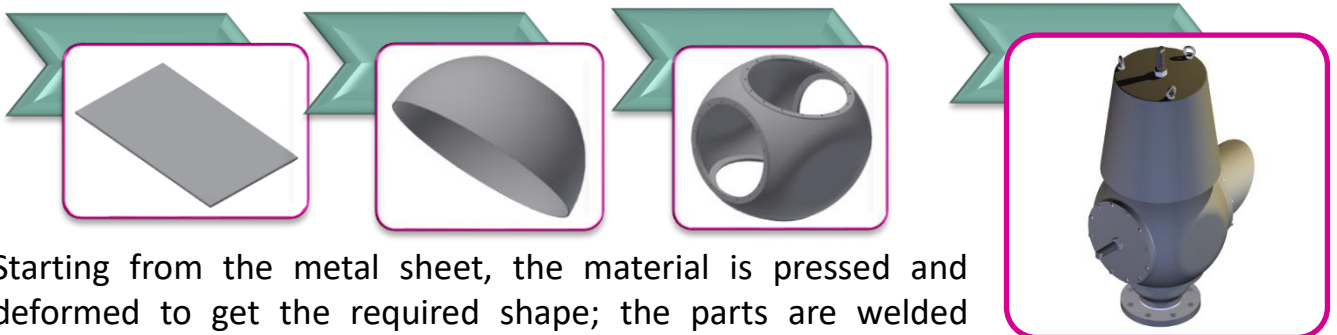
## E-RAINPROOF

Rainproof is made from a low thickness metal sheet which gives it strength but at the same time reduces the overall weight of the valve, it protects the valve from rain, animals and external agents.

## F-RAINPROOFREINFORCEMENT

Simple metal plate which gives the rainproof more strength and stability.

## A NEW MANUFACTURING METHOD FOR THE HIGHEST QUALITY



Starting from the metal sheet, the material is pressed and deformed to get the required shape; the parts are welded together and machined with special systems to achieve a perfect body; the result is a very light but high pressure resistance housing. The raw materials come from Europe and we are the only one providing a 100% Italian manufacturing.



## **HISTORY**

INNOVA s.r.l. is an Italian metalworking company founded in October 2018.

The company was established to expand the SAIAPCK s.r.l. with the acquisition of the TANK PROTECTION DIVISION, branch of FNC.

SAIAPCK s.r.l., founded in 2012 with headquarters in MILAN (already a purchaser of the activity of BIMEC snc, founded in 1983), expert in precision machining and industrial automation. TANK PROTECTION DIVISION, specialist in the production of valves and systems for the protection of tanks and plants of low pressure.

INNOVA srl, despite being a young company, for its activity, it can immediately trust the professionalism, competence and experience of the staff of the two old companies and the reputation of their products on the market.

The fusion of the technological and mechanical know-how of SAIAPCK and the product and market know-how of TANK PROTECTION DIVISION has resulted in a perfect combination for worldwide development.

## **PRODUCTS**

Currently the company is able to provide processing and assembly services for third parties through the OMAW division as well as propos-

als and solutions for industrial automation; the FNC VALVES division manufactures innovative products for the safety of storage facilities such as breather valves, flame arresters and a wide range of accessories for tanks and gas lines.

## **QUALITY**

The company is ISO9001 and ATEX 2014/34 / UE certified with more than 250 type certifications according to ISO16852 in addition to the innumerable certifications related to the different applications (PED, DNV-GL, TR-CU, etc.).

## **MISSION**

Providing real improvement proposals through innovation to satisfy customers by differentiating from commodities and low cost alternatives; expanding the business globally through rapid but structured growth, creating profit through process improvement and the satisfaction of all stakeholders with a particular focus on the quality of life of employees.

## **VISION**

Excellence in service for automation and world leadership in the production of safety devices for plants.

### **INNOVA SRL**

VIA ENRICO FERMI 4, 20080 ZIBIDO SAN GIACOMO (MI) - VAT: IT 07599570962

SALES@INNOVA-ITA.IT – WWW.INNOVA-ITA.IT